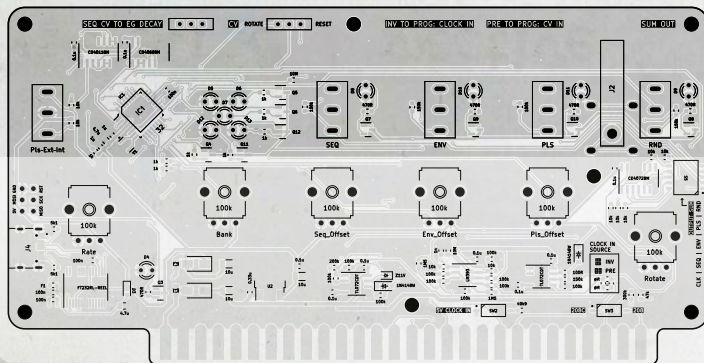
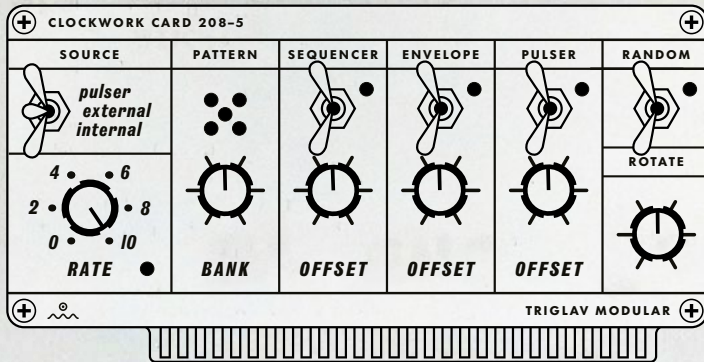


TRIGLAV MODULAR

BOARD REFERENCES



BOM

→ Mouser cart ←

REFERENCE	MFR. NO.	DESCRIPTION	NOTES	QTY.
PLS-INT-EXT	C&K 7103SDZQE	Mini SP3T switch	ON-OFF-ON	1
SEQ, ENV, PLS, RND	C&K 7101SDCQE	Mini SPDT switch	ON-OFF	4
		Red switch cap	Thank	5
D4-D13	WP710A101D	3 mm LED red		10
Rate, Bank, Seq_Offset, Env_Offset, Pls_Offset, Rotate	RD901F-40-15R1-B100K-00DL1	Potentiometers 9mm Linear 100K Round Shaft		6
	Rogan RB Small	Red knob		6
J2	Pomona 73099-2	Red Banana Jack		1
	09.03201.02	Mini SPDT slide switch	10 × 2.5 × 5.9 mm, 1.4 mm	2
	970120354	M3 Female-Female standoff	12 mm	7
	971050354	M3 Male-Female standoff	5 mm	7
		M3 screw		8

FIRMWARE UPDATE

1. Download the latest firmware from triglavmodular.hu/208-cards/clockwork-card
2. Download and install the [Arduino IDE](#).
3. Remove the card from the 208.
4. Plug in the card to your computer with the USB-C port.
5. Open the downloaded firmware project.
6. Select the USB port in the IDE. Choose Arduino Nano if asked.
7. Press upload and verify.
8. Unplug the device from the USB port.
9. You're done.

Designed & built in Budapest
by Triglav Modular.

Anti-copyright, 2024

marton@triglavmodular.hu
@triglav.modular

Special thanks to Michael Jurczak
for digging up the vintage clix patterns.

Dedicated to Charles Cohen.



***“Chips, picking chips off
rocky thumbnail, chips.”***

MACHINES FOR COLOUR MUSICK.